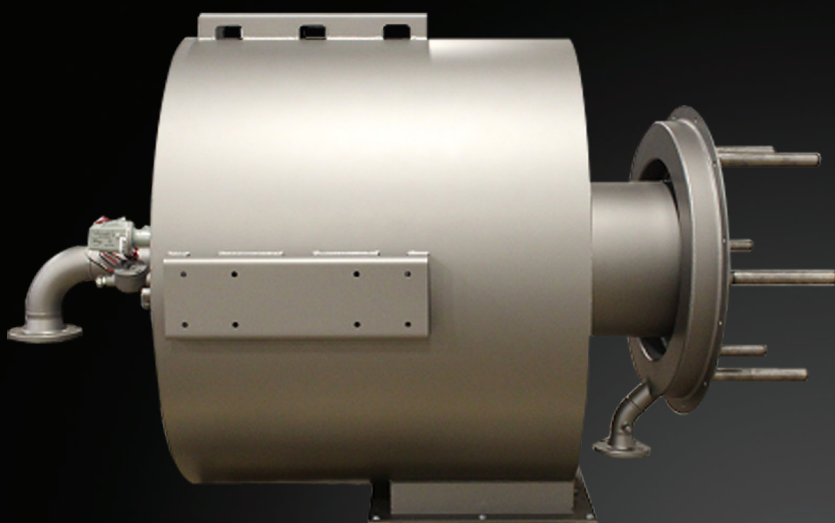


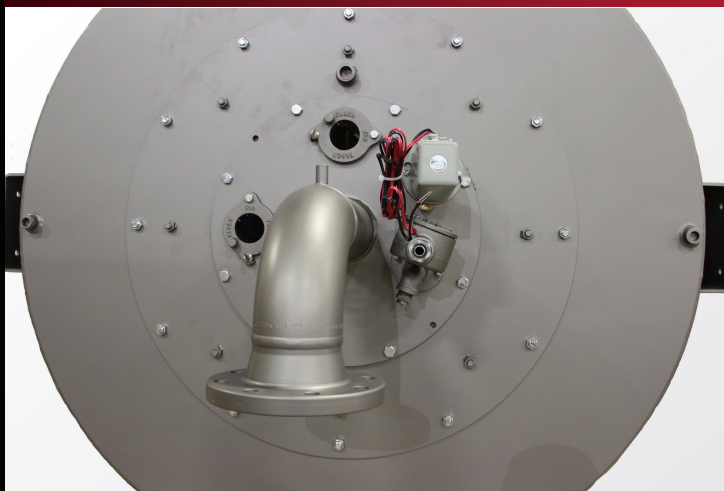
- 13 – 62 MMBTU/hr heat input with maximum chamber temperatures of 2200°F
- Natural gas fired
- Guaranteed emissions NO_x < 30ppm, CO < 50ppm, trace VOC and particulate for natural gas firing without the use of flue gas recirculation (FGR)
- Low excess air
- Up to 10:1 turndown ratio
- Modular design
- Quick delivery from stock modules
- Flexible configurations for:
 - Process heaters
 - Kilns
 - Furnaces
 - Dryers
 - Oxidizers
- Easily upgraded to L₃E in the future with a simple conversion kit.



Burner side view

L₂E-SGB MODULAR LOW EMISSION GAS BURNERS

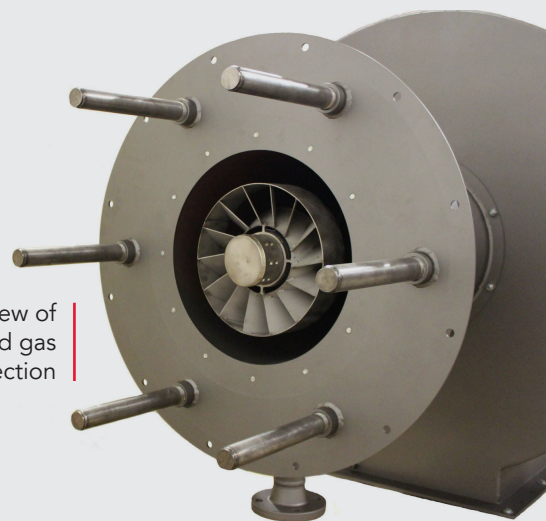
Ideal for emission level compliance driven retrofits utilizing the existing fan, controls and pipe trains.



Operator side view of burner and main gas gun connection

L₂E-SGB Modular Burners are gas fired, forced draft low emission burners for use with either a close coupled or remote mounted fan. These units operate at low excess air levels with turn down ratios up to 10:1. Guaranteed NO_x emissions as low as 30 ppm, 50 ppm of CO, and trace amounts of VOC and particulate emissions without FGR on Natural Gas Fuel.

Gas is fired through a two stage fixed center mounted gun and multiple spud system. The burner includes fixed register geometry and windbox, center fired gas gun and staged gas spuds, spark ignited gas pilot, two sight ports, flame scanner mount, two pressure tap ports and a refractory throat assembly.



Fire side view of burner and staged gas connection

L₂E-SGB MODULAR LOW EMISSION GAS BURNERS

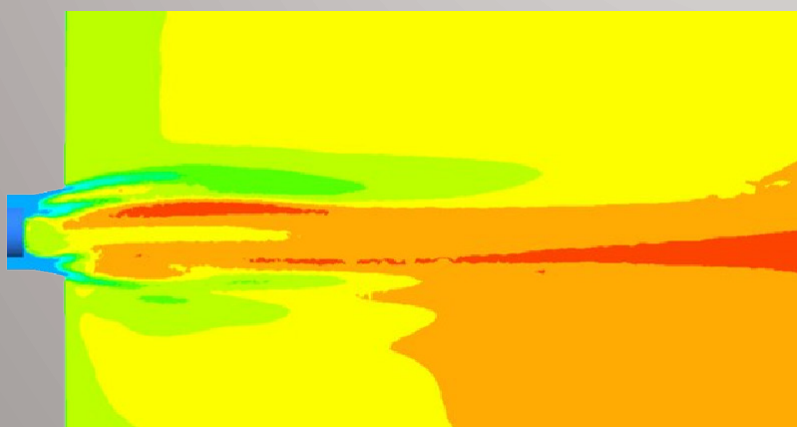
L₂E-SGB Modular Low Emission Gas Burner Typical Specifications:

Heat Input Range (MMBTU/hr)	13 – 62
Maximum Draft Loss (inwc)	4.1
Main Gas Supply Pressure (PSIG)	10 – 12
Pilot Gas Supply Pressure (PSIG)	0.75 – 2.5
Combustion Turndown	Up to 10:1

* Guaranteed Emissions:

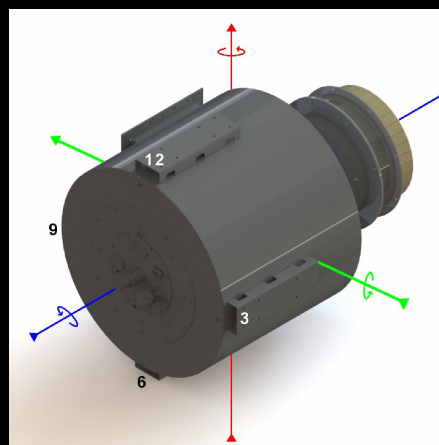
NOx (ppm)	30 – 40 no FGR
CO (ppm)	50
VOC (lb/MMBTU)	0.015
Particulate (lb/MMBTU)	0.005

Need to reach lower NOx values in the future? Upgrade to L₃E emissions performance with our simple conversion kit which consists of replacing the gas spuds and adding FGR



(CFD simulation of L₂E Burner at 30 ppm NOx with no FGR firing in thermal fluid heater furnace)

*Results may vary. Contact factory for details



**Low Emissions, Modular, Flexible, Convenient
Installation Options + Quick Delivery = Ultimate
Retrofit Burner**

The burner can be mounted either vertically up, vertically down or horizontally. Three universal mounting and lifting brackets are located around the burner housing allowing six points to bolt on burner supports and ancillary equipment. The air and gas supply connections can be located in any combination of 45° increments around the axis of the burner to suit site conditions. The entire burner assembly consists of thick steel fabrications designed to provide a long life of trouble free service. Two week deliveries are typical for units supplied with no combustion air fan. Four week deliveries are typical for units supplied with a combustion air fan.

Represented by