

# Faber Pipe Rack Assemblies and Valve Trains

**FABER**  
*Burner Company*

Did you know that Faber Burner Company supplies all sorts of custom ancillary equipment with some of the best delivery times in the business? By leveraging one of the most extensive inventories of industrial fuel train components in the combustion industry ([BurnerPartsNow.com](http://BurnerPartsNow.com)) allows Faber to meet your project's timeline.

Each pipe rack assembly (also referred to by some as a pipe train, valve train, fuel train, valve rack, fuel rack, fuel skid or etc.) is customized to best meet the application's unique conditions and requirements.

Faber's engineered piping systems are designed to safely and accurately control the pressure and flow of any liquid or gas including conventional and alternative fuels, steam, and air. These systems are commonly used to supply burners, igniters, and generator sets with the inputs they need to operate.

## About Faber Pipe Rack Assemblies – Valve Trains:

- Application Specific Sizing & Component Selection
- Designed per **NFPA** guidelines and customer specification
- Various Construction Options – From standard to **ASME B31.1** or **B31.3**
- Various Electrical Wiring Options – From **NEMA 12** to hazardous locations such as **Class 1 Division 2**
- Arrives ready for service. Fully installed, wired, painted, and tested, mounted on a freestanding structural steel rack assembly.

Contact us to learn more!





### Package Burners

The finest and most comprehensive combustion systems available for boilers, high temperature hot water generators, process furnaces and more.



### Forefront Burners

Heavy-duty and user-friendly industrial gas burners for a vast array of applications that require heating capacities from 500,000 to 8,000,000 BTU/Hr.



### Specialty Burners

Specialty burners to meet application-specific fuel-burning needs. Some examples include start-up burners, air heating, biogas guns, and waste gas guns.



### LXE Burners

Modular industrial burners with unparalleled flexibility and performance. Heat inputs range from 10 to 60 MMBTU/Hr.



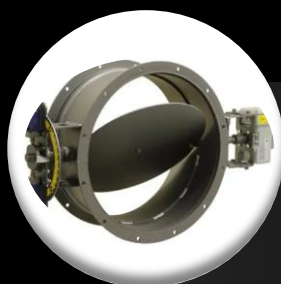
### Igniters and Pilots

Gas, Oil or High Energy Spark. Faber Burner Company has a complete line of igniters that provide safe and reliable light off. 20,000 BTU/Hr to 20 MMBTU/Hr.



### Oil Guns

Atomizers with capacities from 2.1 to 200 MMBTU/Hr. Firing conventional and alternative liquid fuels with either steam, air, or mechanical atomization.



### Dampers

Faber offers industrial dampers for high-temperature air or flue gas: Single & Multi-Blade. Standard sizes are always in stock.



### Control Systems

Faber supplies user-friendly comprehensive strategies for the optimal control of combustion equipment. From basic to custom-engineered state-of-the-art systems.



### Pipe Rack Assemblies

Faber's engineered piping systems are designed to safely and accurately control the pressure and flow of any liquid or gas including conventional and alternative fuels, steam, and air.



### Spare Burner Parts

We support what we build. Faber maintains one of the most extensive inventories in the combustion industry. Thousand of items are ready for immediate shipment.

**Providing Combustion Solutions  
Since 1926**

1000 East Bald Eagle Street, Lock Haven, PA 17745

(570) 748-4009  
[sales@faberburner.com](mailto:sales@faberburner.com)  
[info@faberburner.com](mailto:info@faberburner.com)  
[faberburner.com](http://faberburner.com)  
[burnerpartsnow.com](http://burnerpartsnow.com)

